

MONTHLY MEMBERSHIP PROGRESS REPORT

LOCATION PENNSYLVANIA

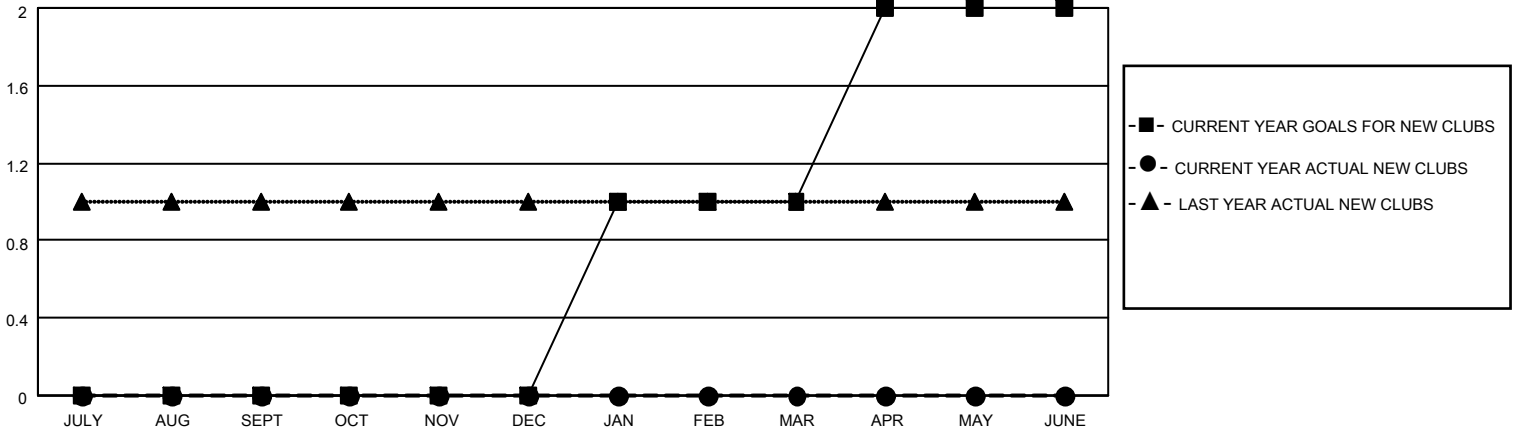
District 14 L

Results as of: 6/30/2022

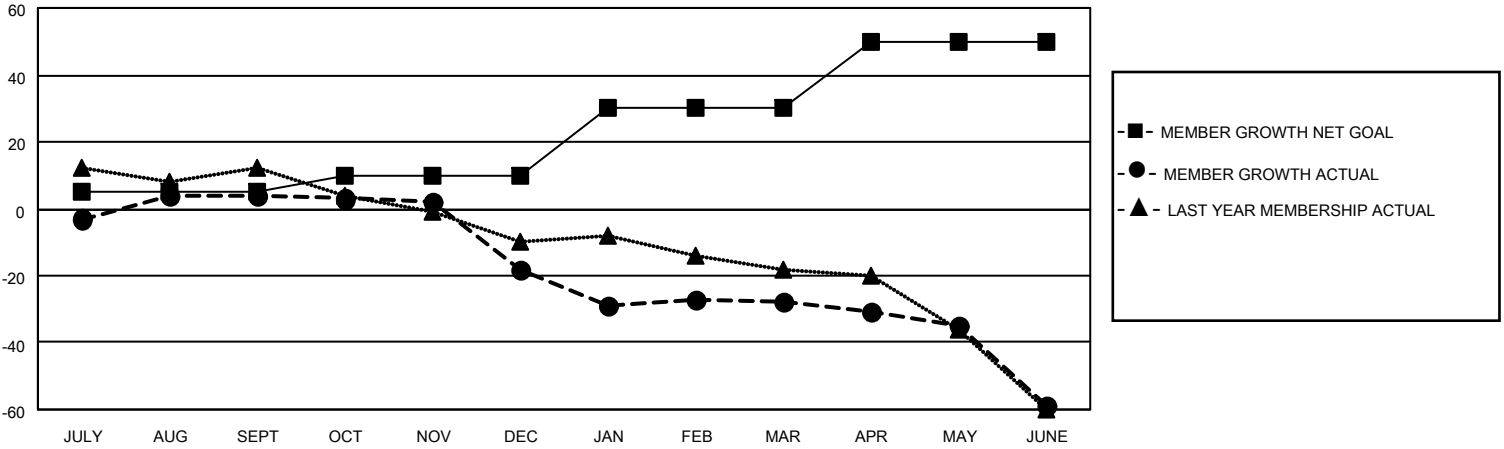
Clubs			
RESULTS FOR 2021-2022			
QUARTER	NEW CLUB GOAL	NEW CLUBS	DROPPED CLUBS
JULY/AUG/SEPT	0	0	0
OCT/NOV/DEC	0	0	0
JAN/FEB/MAR	1	0	1
APR/MAY/JUNE	1	0	0

Members			
RESULTS FOR 2021-2022			
QUARTER	MEMBER GROWTH NET GOAL	MEMBER GROWTH ACTUAL	DROPPED MEMBERS ACTUAL (including transfers)
JULY/AUG/SEPT	5	20	12
OCT/NOV/DEC	5	12	33
JAN/FEB/MAR	20	23	29
APR/MAY/JUNE	20	12	43

GOALS AND ACTUAL NEW CLUBS CUMULATIVE



GOALS AND ACTUAL MEMBERS CUMULATIVE



DROPPED CLUBS: 1

21 CLUBS OF 38 ADDED 1 OR MORE NEW MEMBERS

GENDER DISTRIBUTION

MALE	615 (70.45%)
FEMALE	258 (29.55%)
NON BINARY	0 (0.00%)
PREFER NOT TO ANSWER	0 (0.00%)

DROPPED MEMBERS

[CLICK HERE FOR CUMULATIVE MEMBERSHIP DATA](#)

DECEASED	27
CLUB CANCELLED	0
OTHER	90
TOTAL	117

TOTAL FAMILY UNIT MEMBERS	182
FAMILY MEMBERS PAYING HALF DUES	96